

What families/whānau need to know about school/kura donations

- 1** If your child attends a **decile 1 to 7 school or kura**, the school board of trustees **needs to decide each year whether it should opt-in or not** to the Government's school donations scheme.
- 2** The Government will pay your school or kura \$150 per student per year if the school board agrees to opt in to the scheme **AND** to not ask you for any donations (gifts/koha), except for overnight camps.
- 3** You can ask to attend the board meeting where they will discuss whether to opt-in or not.

If your school/kura does not opt in to the donations scheme, the board may seek donations toward the cost of the core learning programme (curriculum). You can choose if you want to pay some, none or all of the donation. Schools/kura that have not opted in to the donations scheme may ask parents for a donation for any purpose.

School/kura donations schemes

1 If your school/kura opts in to the donations scheme:

- » The board of trustees cannot ask you to make a donation **unless** it is for an overnight **school/kura camp** – and then you can **choose** if you **want** to pay none, some or all of the donation. If you choose not to make a donation, your child cannot be stopped from attending a camp if it is part of the school's core learning programme (curriculum).
- » You cannot be asked to make either a general or specific donation e.g. a donation for a day trip to a museum or a field trip to a hiking track.

2 If your school/kura doesn't opt in to the donations scheme:

- » They will not receive additional funding, so they can ask you to make a donation.
- » You can be asked to make either a general or specific donation (e.g. a donation for a day trip to a museum or a field trip to a hiking track). Donations are voluntary, and so you can **choose** if you **want** to pay none, some or all of the donation. If you choose not to make a donation, your child cannot be stopped from attending a camp or field trip if it is part of the core learning programme (curriculum).

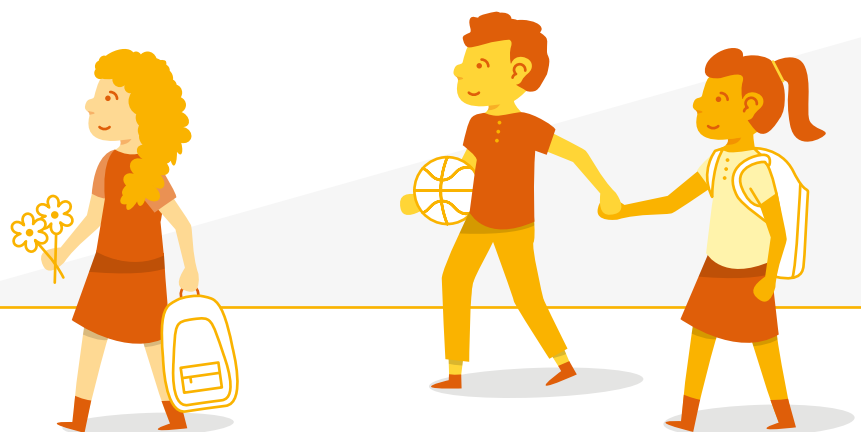


Information for all parents/caregivers/whānau whether your school/kura is in the donations scheme or not

- » Your school or kura cannot charge you for anything involved in the core learning programme (curriculum), including "subject fees."
- » Your school or kura can ask you to pay for goods they provide that are optional (for example pens, lunches) but it is up to you whether you buy them from the school/kura or elsewhere.
- » If the school or kura has a uniform, you need to provide your child with one but you can choose to buy it from the school/kura or, if available, to buy a new or second hand uniform elsewhere.
- » You should not be pressured to buy goods or services from a school or kura **but if you agree to buy a good or service, you must pay for it.**
- » If your child is involved in weekend sports teams or after hours cultural activities (extra-curricular activities), these are optional. If you choose for your child to participate, you may be asked to cover the costs of these activities.
- » You can make a voluntary donation to your school or kura at any time and if you choose to do this, GST is not payable on the donation and you can claim a tax credit.

State integrated schools/kura attendance dues

- » State integrated schools, and kura that are state integrated, have the same core learning programme as other schools and kura (the New Zealand Curriculum) but also their own special character (usually a philosophical or religious belief).
- » You must pay attendance dues to the proprietor of a state integrated school or kura to cover the cost of property-related matters – they are compulsory.
- » The maximum level of attendance dues cannot be increased without the approval of the Minister of Education.



Donations are voluntary, no matter who asks for them. The school donations scheme does not change the long-standing entitlement of students to a free education.

You never have to make a donation to your school or kura but you can give any size donation any time if you want to. If your school or kura decides to opt in to the donations scheme, it cannot ask you for any donations except for overnight camps.

If you have questions regarding payments contact your board of trustees or your local Ministry office. You can also email any questions to school.donations@education.govt.nz

What you can expect if your school/kura opts in to the donations scheme

Key: If my school has opted in to the donations scheme, I can be asked for a donation but I don't have to pay.

If my school has opted in to the donations scheme, I cannot be asked for a donation and I don't have to pay.

I must pay for this if I agree to buy it.

Enrolment

Item	Item category	
Application fee	Other	
Enrolment fee	Other	
Out-of-zone ballot fee	Other	
Bond	Other	

Fees for enrolment are unlawful. As enrolment is free, there can be no charge for anything associated with the enrolment process.

Camps, Trips & Outside Education

Item	Item category	
Overnight camp as part of specific course (Example – Year 12 Outdoor Education)	Curriculum	
Overnight camp as part of general education programme (curriculum) (Examples – Year 9 orientation camp, Year 7 EOTC camp)	Curriculum	
Overnight geography field trip	Curriculum	
Trip/visit as part of general curriculum	Curriculum	
Charge/fee for an optional event (example – weekend ski trip, extra-curricula)	Goods & Services	

Schools and kura can continue to ask for donations for overnight school camps if they are part of the core learning programme (curriculum). Such a request is for a donation. Families and whānau can choose to pay the donation in full, in part or not at all.

ICT

Item	Item category	
Access to school/kura network	Curriculum	
Use of school/kura hardware	Curriculum	
Contribution towards devices such as tablets, smartphones, netbooks, laptops, Chrome Books	Curriculum	
Requiring students/rangatahi to provide software or pay for software licenses	Curriculum	
Requiring students/rangatahi to provide calculators	Curriculum	
Purchase of non-compulsory hardware or software	Goods & Services	

Music

Item	Item category	
Tuition – course-related	Curriculum	
Tuition – optional outside of general education programme (extra-curricula)	Goods & Services	
Instrument hire – course delivery	Curriculum	
Instrument hire – optional (extra-curricula)	Goods & Services	

Programmes & Courses

Item	Item category	
English for Speakers of Other Languages (ESOL)	Curriculum	
Reading recovery and Learning Support	Curriculum	
High school “subject fees”	Curriculum	
Specialist units (examples – Montessori, Arrowsmith, Te Reo, Samoan Language)	Curriculum	
Supplementary programmes (examples – Mathletics, Education Perfect)	Curriculum	
STAR courses	Curriculum	
Tertiary-level courses offered as part of the school programme	Curriculum	
Tertiary course (dual enrolment at tertiary institution)	Goods & Services	
Gifted Education programmes	Goods & Services	

Out-of-school extra programmes that are not part of the core learning programme (curriculum) are considered a good/service.

It should be made clear that participation is voluntary, and incurs a charge.

State-integrated Schools/Kura

Item	Item category	
Attendance dues – these are compulsory	Other	

Course Materials

Item	Item category	
Materials used as part of delivering core learning programme (curriculum)	Curriculum	
Take-home component where parents have agreed to purchase (examples – letterbox, item of clothing)	Goods & Services	

Schools and kura cannot ask parents/whānau to pay for materials used in delivering the core learning programme (curriculum). This includes cooking ingredients for a food technology class.

Food eaten as part of a food technology class is part of the core learning programme (curriculum) – this is because students need to taste the food they prepare to ensure it is fit for consumption (sensory evaluation).

Schools can charge parents/whānau for the cost of materials when they have agreed that the item can be taken home – for example an item of clothing.

Swimming

Item	Item category	
Swimming as part of general curriculum (at school/kura or off-site)	Curriculum	
Swimming as voluntary activity (lunch time or after hours)	Goods & Services	

Optional Activities

Item	Item category	
Visiting drama or music groups (non-curriculum)	Goods & Services	
School sports teams	Goods & Services	
After-hours/lunchtime/weekend culture or sports activities	Goods & Services	

Boards can charge parents/whānau for optional activities, like sports trips, that are outside the core learning programme (curriculum). Participation is optional, and schools can charge parents/whānau if they have agreed for their child to participate.

School and Kura Uniforms

Item	Item category	
School/kura uniform from a school/kura uniform shop	Goods & Services	

Schools and kura are not expected to make profits from school uniforms – they should recover only their costs.

Resources & Stationery

Item	Item category	
Textbooks	Curriculum	
Workbooks (compulsory)	Curriculum	
Workbooks (optional, when parents have agreed to purchase)	Goods & Services	
Photocopying/printing as part of core education programme (curriculum use)	Curriculum	
Photocopying/printing (personal and not needed for core programme learning, extra-curricula use)	Goods & Services	
Stationery (if parents decide to buy from school/kura stationery shop)	Goods & Services	

Schools and kura are not expected to make profits from school stationery – they should recover only their costs.

Operational Costs

Item	Item category	
Heating, lighting and water	Operational	
Soap, hand sanitiser, tissues	Operational	

Boards cannot ask families and whānau for contributions to operational costs – these costs should be covered by the school's operational funding, which is paid by the Ministry of Education.

School/Kura Publications

Item	Item category	
School/kura magazines are optional to buy	Goods & Services	

School/Kura Events

Item	Item category	
School/kura Ball	Goods & Services	

Students can attend this type of event if they buy a ticket. Students should not be stopped from accessing optional activities because their families/whānau have not paid for other items. For example schools/kura should not require families/whānau to pay for sports costs or a donation towards the school camp before they can buy a ticket to the school ball.